



**SEAMAR**<sup>®</sup>  
WATERMAKERS

VESSEL SYSTEMS





*Water is freedom*



**SEAMAR**  
WATERMAKERS

|                   |                           |
|-------------------|---------------------------|
| SERIAL NO / DATE  | 200500003                 |
| PRODUCTION LT / M | SM 500                    |
| FEEDING VOLTAGE   | 380V - 50HZ / 440V - 60HZ |

CE SEAMAR WATERMAKERS IS AN ISO 9001 CERTIFIED COMPANY  
THIS UNIT IS CERTIFIED BY CEI-ITALIA MADE IN ITALY



# About Us

## OUR MISSION

To provide superior, innovative, and reliable products and service to our domestic and foreign customers with the reverse osmosis system.

## OUR VISION

To continuously improve our product and service quality to meet our customers' needs in a peak point and creating permanent differences which will be significant in the sector



# Products



**SM 1000**



**SM 500L**



**SM 500M**



**SM 500S**



**SM500**







*Water is Economy*



### SM 500L

**Capacity:** 500 lt/h  
**Power:** 380V-AC -50 Hz  
440V-AC -60 Hz  
4 kw/900 rpm  
**Pump rpm:** 900 rpm  
**Weight:** 200 - 230 Kg  
**Membrane:** 1 x 8,0" x 40"



### SM 500M

**Capacity:** 500 lt/h  
**Power:** 380V-AC -50 Hz  
440V-AC -60 Hz  
4 kw/900 rpm  
**Pump rpm:** 900 rpm  
**Weight:** 180 - 210 Kg  
**Membrane:** 1 x 8,0" x 40"



### SM 500S

**Capacity:** 500 lt/h  
**Power:** 380V-AC -50 Hz  
440V-AC -60 Hz  
4 kw/900 rpm  
**Pump rpm:** 900 rpm  
**Weight:** 160 - 190Kg  
**Membrane:** 1 x 8,0" x 40"

**SM1000**





## **SM 1000**

**Capacity:** 1000 lt/h  
**Power:** 380V-AC -50 Hz  
440V-AC -60 Hz  
2 x 4 kw/900 rpm  
**Pump rpm:** 900 rpm  
**Weight:** 420Kg  
**Membrane:** 2 x 8,0" x 40"



*Spare Parts*

**ATTENTION**  
**HIGH PRESSURE**

THIS VESSEL MAY CAUSE LOSS OF LIFE OR SEVERE BODILY HARM AND/OR PROPERLY DAMAGE IF NOT CORRECTLY INSTALLED, OPERATED AND MAINTAINED. SEE INSTRUCTION MANUAL

- > MAX. OPERATING PRESSURE 100
- > OPERATING TEMPERATURE  
-10C MIN +50C

**SEALED**

**SEALED**

...ITY  
...PSI (70BAR)  
...URE RANGE  
...MAX  
...MAR

ALZ  
ORANGE

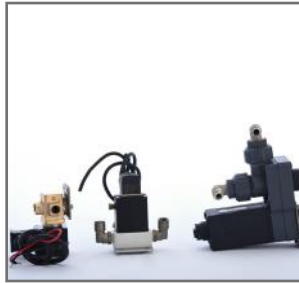
10

# SPARE PARTS

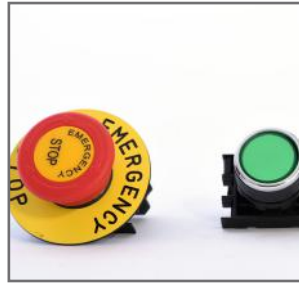
**SEAMAR**<sup>®</sup>  
WATERMAKERS



High and Low Pressure Switches



Three-Way Solenoid Valves



Start-Stop Buttons



Contactors



10' Double Filter Containers (10 Bars)



120 L - 400 L Flowmeters



High and Low Pressure Meters



High and Low Pressure Meters



Needle Valve



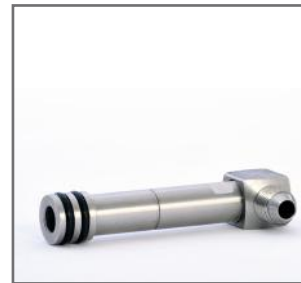
9/16 UNF 316T Sleeves



3/8 R7 High Pressure Hose



Membrane Clamps and Rubber Wedges



Membrane Case End Cap



Bronze Fittings



Three-way Ball Valves



High Pressure Hose Record



High Pressure Hose Sleeves



High Pressure Hose Fittings



316 L Chrome Feeding Pumps



H.P. Pump



Electrical Engine



Dosage Pump



Membrane Casing Caps and Segments



Prop Case for Saltiness Monitoring



Sand Filter



Chemicals



Chemical Tank



Watermaker Chemicals and Oils



Pre-filter  
(5 Micron and 25 Micron)



End Cap Set



8" Housing



Membranes





**SEAMAR**  
WATERMAKERS

SEAMAR  
WATERMAKERS S.p.A.  
Via S. Giuseppe 10  
20139 Milano (MI) - Italy  
Tel. +39 02 574911  
Fax +39 02 574912  
www.seamarwatermakers.com  
CE

SEAMAR  
WATERMAKERS  
SAND FILTER  
OPERATING INSTRUCTIONS  
1. The filter must be installed in a vertical position.  
2. The filter must be installed in a clean and dry environment.  
3. The filter must be installed in a well-ventilated area.  
4. The filter must be installed in a location where it is easily accessible for maintenance.  
5. The filter must be installed in a location where it is protected from direct sunlight.  
6. The filter must be installed in a location where it is protected from rain and other weather conditions.  
7. The filter must be installed in a location where it is protected from dust and debris.  
8. The filter must be installed in a location where it is protected from vibration.  
9. The filter must be installed in a location where it is protected from noise.  
10. The filter must be installed in a location where it is protected from electromagnetic interference.  
11. The filter must be installed in a location where it is protected from fire and explosion hazards.  
12. The filter must be installed in a location where it is protected from theft and vandalism.  
13. The filter must be installed in a location where it is protected from unauthorized access.  
14. The filter must be installed in a location where it is protected from unauthorized use.  
15. The filter must be installed in a location where it is protected from unauthorized modification.

SEAMAR  
WATERMAKERS

SEAMAR  
WATERMAKERS  
SEDIMENT FILTER  
5 Micron

SEAMAR  
WATERMAKERS  
SEDIMENT FILTER  
5 Micron





**SEAMAR<sup>®</sup>**  
WATERMAKERS

*Water is freedom*

**NOTES**

Dotted lines for writing notes.





**SEAMAR**<sup>®</sup>  
WATERMAKERS

**SEALINE**<sup>®</sup>  
COMPOSITE

SEAMAR A.Ş.

Ferhatpaşa Mahallesi 15. Sokak No:28 Ataşehir - İstanbul / TURKEY +90 216 629 44 46  
info@seamarwatermakers.com > www.seamarwatermakers.com

